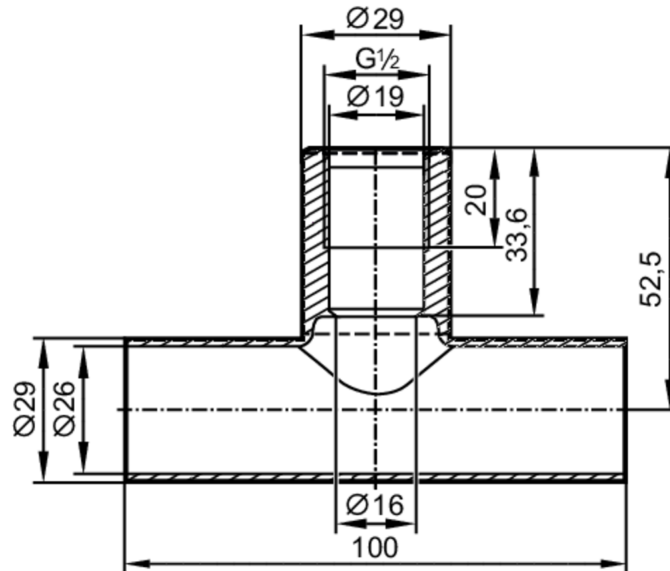




T-piece

T-PIPE/G1/2/L100/DN25



EC 1935/2004 EHEDG Tested FCM

| Application | |
|---|---|
| Design | for sensors and adapters with process connection G 1/2 A |
| Pressure rating [bar] | 40 |
| Tests / approvals | |
| Pressure Equipment Directive | A possible classification to PED depends on the application and has to be carried out by the user / operator. |
| Safety instructions | The compatibility between medium and product material has to be checked in all applications. |
| Mechanical data | |
| Weight [g] | 327 |
| Materials | stainless steel (1.4404 / 316L) |
| Sensor connection | G 1/2 sealing cone |
| Process connection | welding adapter Ø 29 mm |
| Surface characteristics Ra/Rz of the wetted parts | 0.8 / 4 |
| Аксессуары | |
| Items supplied | O-ring: 1, FKM |
| Remarks | |
| Pack quantity | 1 pcs. |